

p. 240



p. 194

DIN 69893 HSK-A

ER
WD
PF
CM
MS

p. 240



p. 198

DIN 69871 AD+B

ER
WD
PF
CM
MS

p. 240

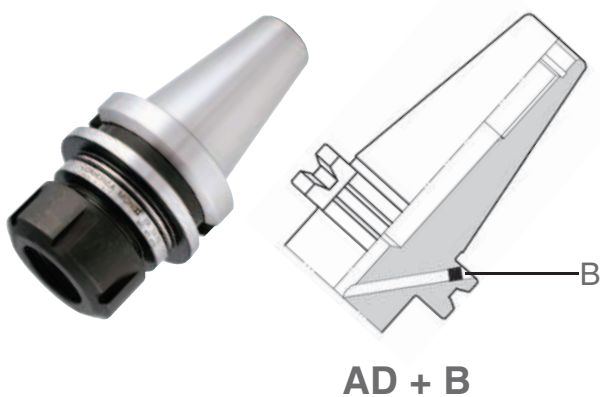


p. 204

MAS 403 BT AD+B

ER
WD
PF
CM
MS





*Quality, precision,
strength and convenience*

- INTEGRATED TOOLHOLDERS
- INTEGRIERTEN WERKZEUGHALTER
- PORTAHERRAMIENTAS INTEGRALES
- PORTE-OUTILS INTÉGRAUX
- PORTAUTENSILI INTEGRALI

GB The integrated MONOd' tool holders represent an ideal solution to equip any type of machine tool with HSK 63 and 100, DIN AD+B and BT AD+B base arbors, guaranteeing the benefits of a high quality and high precision, with a price that is highly competitive on the market. The MONOd' program includes ER collet chucks, Weldon end mill holders, Morse tapers, and tapping chucks.

D Die vollständigen Werkzeughalter MONOd' stellen die ideale Lösung zum Ausstatten jeder Art von Werkzeugmaschine mit Basisanschluss HSK 63 und 100, DIN AD+B und BT AD+B dar und garantieren die Vorteile hoher Qualität und hohem Präzisionsgrad, zu einem sehr wettbewerbsfähigem Marktpreis. Das MONOd' Programm schließt ER Zangenhalterungen, Weldon, Fräsenhalterung, Reduktionen, Schraubstöcke und Gewindebohrer ein.

E Los portaherramientas integrales MONOd' representan la solución ideal para equipar cualquier tipo de máquina herramienta con unión base HSK 63 y 100, DIN AD+B y BT AD+B, garantizando las ventajas de elevada calidad y alto grado de precisión, con un precio de mercado altamente competitivo. El programa MONOd' incluye portapinzas ER, Weldon, Portafresas, Reducciones a Morse y Roscadores.

F Les porte-outils intégraux MONOd' représentent la solution idéale pour équiper tous les types de machine outils avec une fixation de base HSK 63 et 100, DIN AD+B et BT AD+B, en garantissant les avantages de la qualité élevée et du haut niveau de précision, à un prix de marché très compétitif. Le programme MONOd' comprend des porte-pinces ER, Weldon, des porte-fraises, des réductions des étaux et des taraudeurs.

I I portautensili integrali MONOd' rappresentano la soluzione ideale per attrezzare ogni tipo di macchina utensile con attacco base HSK 63 e 100, DIN AD+B e BT AD+B, garantendo i vantaggi di elevata qualità e alto grado di precisione, con un prezzo di mercato altamente concorrenziale. Il programma MONOd' include portapinzas ER, Weldon, Portafrese, Riduzioni Morse e Maschiatori.

DIN 69893 HSK-A ER - DIN 6499

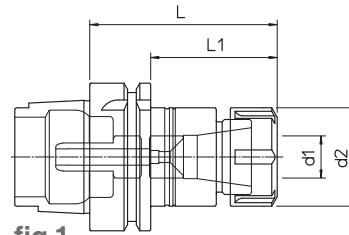


fig.1

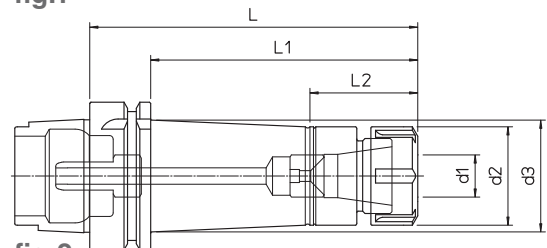


fig.2

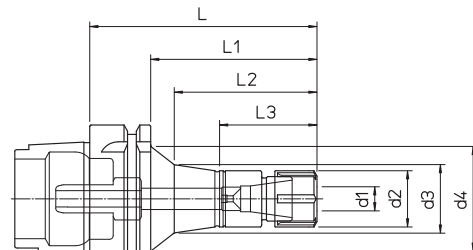
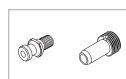
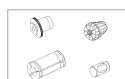


fig.3

- Supplied with coolant tube - without collets and clamping wrenches
- Lieferung inklusive Kühlmittelrohr. Ohne Spannzangen und Spannschlüssel.
- Completo con racor para el refrigerante - Pinzas elásticas y llaves de apriete excluidas
- Pourvu de raccord pour liquide d'arrosage - Sans pinces et clés de serrage
- Completo di raccordo per il refrigerante - Pinze elastiche e chiavi di serraggio escluse

HSK-A	REF.	CODE	TYPE	d ₁	d ₂	d ₃	d ₄	L	L ₁	L ₂	L ₃	kg	fig.
63	HSK-A63 ER16.80	71HСКА063ER1608	ER 16 M	0.5 ~ 10	22	32		80	54	41		1.1	1
	HSK-A63 ER16.120	71HСКА063ER1612				31		120	94	1.9		2	
	HSK-A63 ER25.80	71HСКА063ER2508	ER 25	1 ~ 16	42	-		80	54	-		1.3	1
	HSK-A63 ER25.140	71HСКА063ER2514				47.5		140	114	46		1.7	2
	HSK-A63 ER32.90	71HСКА063ER3209	ER 32	2 ~ 20	50	-		90	64	-		1.6	1
	HSK-A63 ER32.160	71HСКА063ER3216				160		134	-	2.2		2	
100	HSK-A100 ER16.100	71HСКА100ER1610	ER 16 M	0.5 ~ 10	22	25	45	100	71	61	41.5	2.3	3
	HSK-A100 ER16.160	71HСКА100ER1616				34.5	44	160	131	126		2.5	
	HSK-A100 ER25.100	71HСКА100ER2510	ER 25	1 ~ 16	42	45.5		100	71	47		2.6	
	HSK-A100 ER25.160	71HСКА100ER2516				49.5		160	131			3.2	
	HSK-A100 ER32.120	71HСКА100ER3212	ER 32	2 ~ 20	50	55		120	91	52		3.1	2
	HSK-A100 ER32.160	71HСКА100ER3216				56.5		160	131			3.7	
	HSK-A100 ER40.120	71HСКА100ER4012	ER 40	3 ~ 26	63	71.5		120	91	60		3.5	



- WELDON TOOLHOLDER
- WERKZEUGAUFNAHME FÜR WELDON
- PORTAHERRAMIENTA WELDON
- PORTE-OUTIL WELDON
- PORTAUTENSILE WELDON

DIN 69893 HSK-A WD - DIN 1835-B

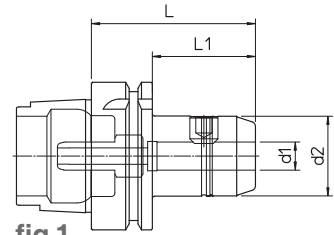


fig.1

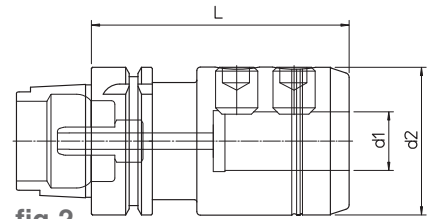


fig.2

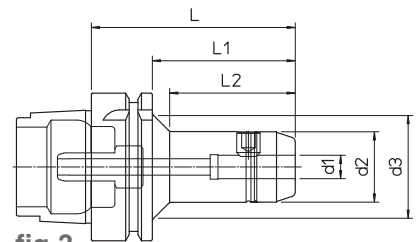


fig.3

- Supplied with coolant tube
- Lieferung inklusive Kühlmittelrohr
- Completo con racor para el refrigerante
- Pourvu de raccord pour liquide d'arrosage
- Completo di raccordo per il refrigerante

HSK-A	REF.	CODE	d ₁ ^{H5}	d ₂	d ₃	L	L ₁	L ₂	kg	fig.
63	HSK-A63 WD06.60	71HСКА063WD0606	6	23	-	60	34	-	0.8	1
	HSK-A63 WD08.65	71HСКА063WD0806	8	26		65	39		0.9	
	HSK-A63 WD10.70	71HСКА063WD1007	10	30		70	44		1.1	
	HSK-A63 WD12.70	71HСКА063WD1207	12	34		80	54		1.2	
	HSK-A63 WD16.80	71HСКА063WD1608	16	42		80	54		1.4	
	HSK-A63 WD20.80	71HСКА063WD2008	20	50		110	-		1.5	
	HSK-A63 WD25.110	71HСКА063WD2511	25	63		110	-		2.3	
	HSK-A63 WD32.110	71HСКА063WD3211	32	70		110	-		2.5	
100	HSK-A100 WD10.90	71HСКА100WD1009	10	30	45	90	61	53.5	2.3	3
	HSK-A100 WD12.100	71HСКА100WD1210	12	34		100	71	65.5	2.4	
	HSK-A100 WD14.100	71HСКА100WD1410	14	38		100	71	67.5	2.5	
	HSK-A100 WD16.100	71HСКА100WD1610	16	42		110	81	-	2.6	
	HSK-A100 WD18.110	71HСКА100WD1811	18	46	-	110	81	-	3	1
	HSK-A100 WD20.110	71HСКА100WD2011	20	50		120	91	-	3.1	
	HSK-A100 WD25.120	71HСКА100WD2512	25	63		120	91	-	3.9	
	HSK-A100 WD32.120	71HСКА100WD3212	32	70		120	91	-	4.3	
HSK-A100 WD40.120	71HСКА100WD4012	40	80	120	91	-	4.8			

DIN 69893 HSK-A PF

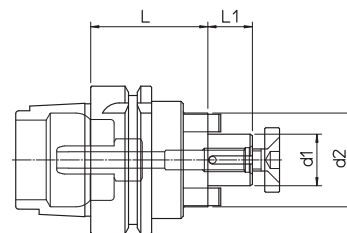


fig.1

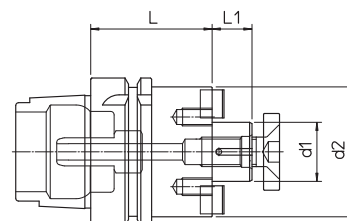
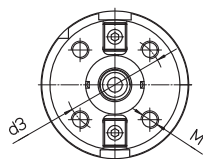


fig.2

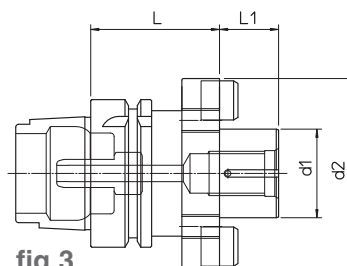
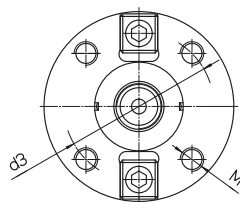
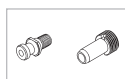


fig.3

- Supplied with coolant tube
- Lieferung inklusive Kühlmittelrohr
- Completo con racor para el refrigerante
- Pourvu de raccord pour liquide d'arrosage
- Completo di raccordo per il refrigerante

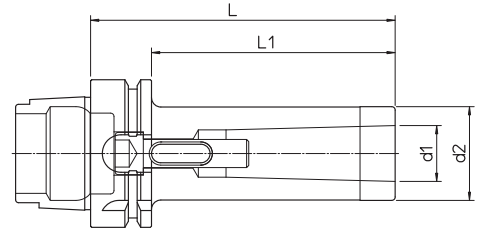
HSK-A	REF.	CODE	d ₁	d ₂	d ₃	M	L	L ₁	kg	fig.
63	HSK-A63 PF16.50	71HSKA063PF1605	16	32			50	17	1.1	1
	HSK-A63 PF22.50	71HSKA063PF2205	22	40	-			19	1.2	
	HSK-A63 PF27.55	71HSKA063PF2705	27	50				21	1.4	
	HSK-A63 PF32.60	71HSKA063PF3206	32	60				24	1.8	
100	HSK-A100 PF22.65	71HSKA100PF2265	22	40			65	19	2.3	2
	HSK-A100 PF27.65	71HSKA100PF2765	27	50	-			21	2.5	
	HSK-A100 PF32.70	71HSKA100PF3270	32	60			70	24	2.9	
	HSK-A100 PF40.70	71HSKA100PF4070	40	88	66.7	M12		27	3.3	
	HSK-A100 PF60.75	71HSKA100PF6075	60	128.5	101.6	M16		75	4.2	



- MORSE TAPER TOOLHOLDER
- WERKZEUGAUFNAHME FÜR MORSEKEGEL
- PORTAHERRAMIENTA CONO MORSE
- PORTE-OUTIL CONE MORSE
- PORTAUTENSILE CONO MORSE

DIN 69893 HSK-A

CM - DIN 228 AB

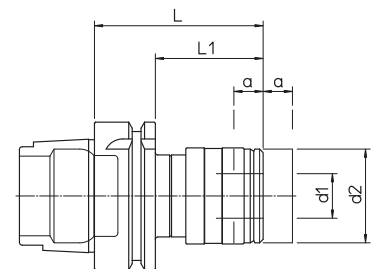


HSK-A	REF.	CODE	MORSE	d ₁	d ₂	L	L ₁	kg
63	HSK-A63 CM2.110 A-B	71HSKA063CMB211	2	17.780	32	110	84	2
	HSK-A63 CM3.130 A-B	71HSKA063CMB313	3	23.825	40	130	104	2.2
	HSK-A63 CM4.155 A-B	71HSKA063CMB415	4	31.267	48	155	129	2.6

- TAPPING TOOLHOLDER
- AUFNAHME MIT GEWINDESCHNEIDSCHNELLWECHSELFUTTER
- PORTAHERRAMIENTA PARA ROSCAR
- PORTE-OUTIL DE TARAUDAGE
- PORTAUTENSILE MASCHIATORE

DIN 69893 HSK-A

MS



HSK-A	REF.	CODE	d ₁	d ₂	L	L ₁	a	kg
63	HSK-A63 MS1 M3-12	71HSKA063M10312	19	39	72	46	7.5	1
	HSK-A63 MS2 M8-20	71HSKA063M20820	31	60	110	84	10	1.7



DIN 69871 AD+B40 ER - DIN 6499

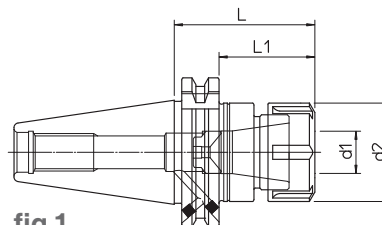


fig.1

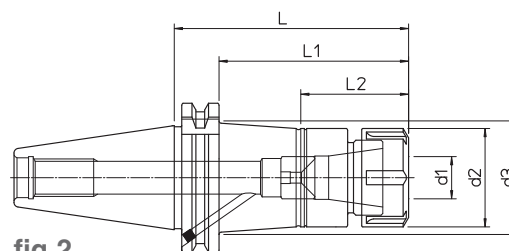


fig.2

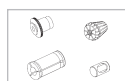
- Supplied without collets and clamping wrenches
- Ohne Spannzangen und Spanschlüssel.
- Pinzas elásticas y llaves de apriete excluidas
- Sans pinces et clés de serrage
- Pinze elastiche e chiavi di serraggio escluse

DIN	REF.	CODE	TYPE	d1	d2	d3	L	L1	L2	kg	fig.
40	DIN69871-AD+B40 ER16.60	71DIN-B40ER1606	ER 16 M	0.5 ~ 10	22	-	60	41	-	0.9	1
	DIN69871-AD+B40 ER16.100	71DIN-B40ER1610				29.5	100	81	41	1	2
	DIN69871-AD+B40 ER16.160	71DIN-B40ER1616				38	160	141	41	2	2
	DIN69871-AD+B40 ER25.60	71DIN-B40ER2506	ER 25	1 ~ 16	42	-	60	41	-	1.1	1
	DIN69871-AD+B40 ER25.100	71DIN-B40ER2510				47	100	81	46	1.6	2
	DIN69871-AD+B40 ER25.160	71DIN-B40ER2516				50	160	141	46	2.1	2
	DIN69871-AD+B40 ER32.70	71DIN-B40ER3207	ER 32	2 ~ 20	50	-	70	51	-	1.2	1
	DIN69871-AD+B40 ER32.110	71DIN-B40ER3211					110	91		1.7	
	DIN69871-AD+B40 ER32.160	71DIN-B40ER3216					160	141		2.7	
	DIN69871-AD+B40 ER40.80	71DIN-B40ER4008	ER 40	3 ~ 26	63	-	80	61	-	1.3	
	DIN69871-AD+B40 ER40.120	71DIN-B40ER4012					120	101	2.3		
	DIN69871-AD+B40 ER40.160	71DIN-B40ER4016					160	141	3.3		

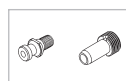
249



242-244



240



223



- COLLET CHUCK HOLDER
- SPANNZANGENFUTTER
- PORTAPINZAS
- PORTE-PINCES
- PORTAPINZE

DIN 69871 AD+B50 ER - DIN 6499

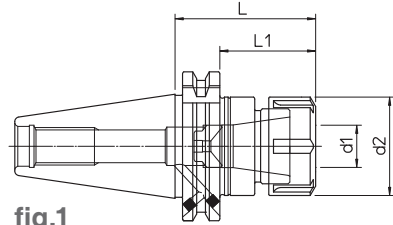


fig.1

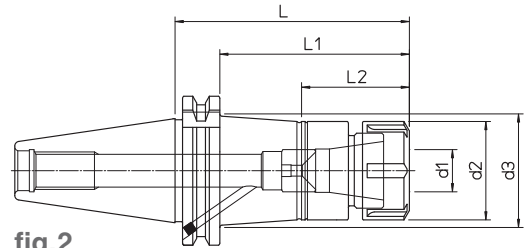
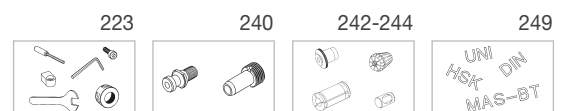


fig.2

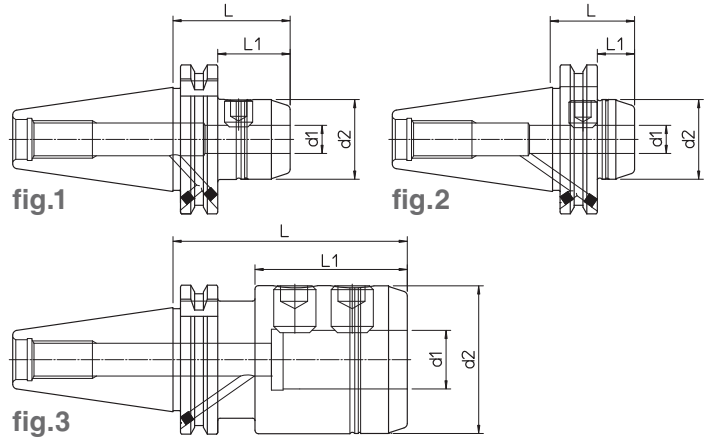
- Supplied without collets and clamping wrenches
- Ohne Spannzangen und Spannschlüssel.
- Pinzas elásticas y llaves de apriete excluidas
- Sans pinces et clés de serrage
- Pinze elastiche e chiavi di serraggio escluse

DIN	REF.	CODE	TYPE	d ₁	d ₂	d ₃	L	L ₁	L ₂	kg	fig.
50	DIN69871-AD+B50 ER16.100	71DIN-B50ER1610	ER 16 M	0.5 ~ 10	22	29.5	100	81	41	2.5	2
	DIN69871-AD+B50 ER16.160	71DIN-B50ER1616				32.5	160	141		3.3	
	DIN69871-AD+B50 ER25.70	71DIN-B50ER2507	ER 25	1 ~ 16	42	-	70	51	-	2.5	1
	DIN69871-AD+B50 ER25.110	71DIN-B50ER2511				48	110	91	46	2.8	2
	DIN69871-AD+B50 ER25.160	71DIN-B50ER2516				50	160	141		3.6	
	DIN69871-AD+B50 ER32.70	71DIN-B50ER3207	ER 32	2 ~ 20	50	-	70	51	-	2.9	1
	DIN69871-AD+B50 ER32.110	71DIN-B50ER3211				55	110	91	52	3.4	2
	DIN69871-AD+B50 ER32.160	71DIN-B50ER3216				57.5	160	141		4	
	DIN69871-AD+B50 ER40.100	71DIN-B50ER4010	ER 40	3 ~ 26	63	65	100	81	55	3.8	
	DIN69871-AD+B50 ER40.160	71DIN-B50ER4016				70	160	141		4.3	

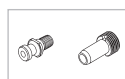


- WELDON TOOLHOLDER
- WERKZEUGAUFNAHME FÜR WELDON
- PORTAHERRAMIENTA WELDON
- PORTE-OUTIL WELDON
- PORTAUTENSILE WELDON

DIN 69871 AD+B40 WD - DIN 1835-B

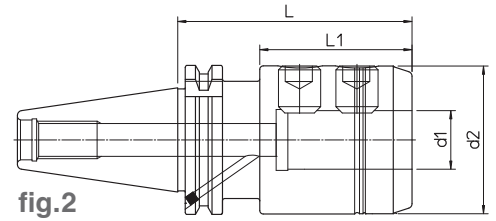
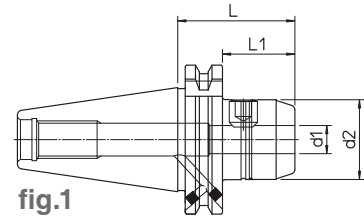


DIN	REF.	CODE	d ₁ ^{H5}	d ₂	L	L ₁	kg	fig.
40	DIN69871-AD+B40 WD06.50	71DIN-B40WD0605	6	23	50	31	0.8	1
	DIN69871-AD+B40 WD06.110	71DIN-B40WD0611			110	91	1	
	DIN69871-AD+B40 WD06.160	71DIN-B40WD0616			160	141	1.1	
	DIN69871-AD+B40 WD08.50	71DIN-B40WD0805	8	26	50	31	0.9	
	DIN69871-AD+B40 WD08.110	71DIN-B40WD0811			110	91	1.1	
	DIN69871-AD+B40 WD08.160	71DIN-B40WD0816			160	141	1.3	
	DIN69871-AD+B40 WD10.50	71DIN-B40WD1005	10	30	50	31	1	
	DIN69871-AD+B40 WD10.110	71DIN-B40WD1011			110	91	1.4	
	DIN69871-AD+B40 WD10.160	71DIN-B40WD1016			160	141	1.6	
	DIN69871-AD+B40 WD12.35	71DIN-B40WD1203	12	34	35	16	1	2
	DIN69871-AD+B40 WD12.50	71DIN-B40WD1205			50	31	1.1	1
	DIN69871-AD+B40 WD12.110	71DIN-B40WD1211			110	91	1.4	
	DIN69871-AD+B40 WD12.160	71DIN-B40WD1216			160	141	1.7	
	DIN69871-AD+B40 WD14.50	71DIN-B40WD1405	14	38	50	31	1.2	
	DIN69871-AD+B40 WD14.110	71DIN-B40WD1411			110	91	1.6	
	DIN69871-AD+B40 WD16.35	71DIN-B40WD1603	16	42	35	16	1.1	2
	DIN69871-AD+B40 WD16.63	71DIN-B40WD1606			63	44	1.3	1
	DIN69871-AD+B40 WD16.110	71DIN-B40WD1611			110	91	1.7	
	DIN69871-AD+B40 WD16.160	71DIN-B40WD1616			160	141	2.2	
	DIN69871-AD+B40 WD18.63	71DIN-B40WD1806	18	46	63	44	1.4	
	DIN69871-AD+B40 WD18.110	71DIN-B40WD1811			110	91	1.9	
	DIN69871-AD+B40 WD20.35	71DIN-B40WD2003	20	44	35	16	1.2	2
	DIN69871-AD+B40 WD20.63	71DIN-B40WD2006			63	44	1.5	1
	DIN69871-AD+B40 WD20.110	71DIN-B40WD2011		50	110	91	2.1	
	DIN69871-AD+B40 WD20.160	71DIN-B40WD2016			160	141	2.6	
	DIN69871-AD+B40 WD25.35	71DIN-B40WD2503	25	63	35	16	1.3	2
	DIN69871-AD+B40 WD25.100	71DIN-B40WD2510			100	65	2	3
	DIN69871-AD+B40 WD25.160	71DIN-B40WD2516			160	125	3.2	
DIN69871-AD+B40 WD32.100	71DIN-B40WD3210	32	70	100	65	2.5		
DIN69871-AD+B40 WD32.160	71DIN-B40WD3216			160	125	3.9		

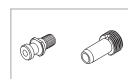


- WELDON TOOLHOLDER
- WERKZEUGAUFNAHME FÜR WELDON
- PORTAHERRAMIENTA WELDON
- PORTE-OUTIL WELDON
- PORTAUTENSILE WELDON

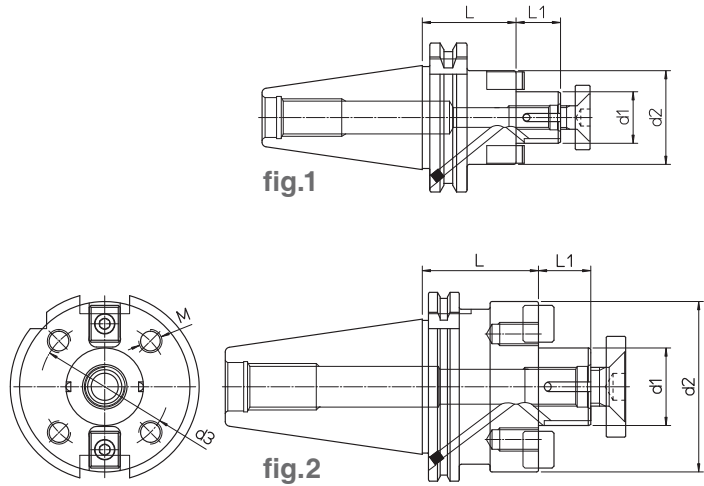
DIN 69871 AD+B50 WD - DIN 1835-B



DIN	REF.	CODE	d ₁ ^{H5}	d ₂	L	L ₁	kg	fig.
50	DIN69871-AD+B50 WD06.63	71DIN-B50WD0606	6	23	63	44	2.3	1
	DIN69871-AD+B50 WD06.110	71DIN-B50WD0611			110	91	2.4	
	DIN69871-AD+B50 WD06.160	71DIN-B50WD0616			160	141	2.5	
	DIN69871-AD+B50 WD08.63	71DIN-B50WD0806	8	26	63	44	2.4	
	DIN69871-AD+B50 WD08.110	71DIN-B50WD0811			110	91	2.5	
	DIN69871-AD+B50 WD08.160	71DIN-B50WD0816			160	141	2.7	
	DIN69871-AD+B50 WD10.63	71DIN-B50WD1006	10	30	63	44	2.5	
	DIN69871-AD+B50 WD10.110	71DIN-B50WD1011			110	91	2.7	
	DIN69871-AD+B50 WD10.160	71DIN-B50WD1016			160	141	2.9	
	DIN69871-AD+B50 WD12.63	71DIN-B50WD1206	12	34	63	44	2.6	
	DIN69871-AD+B50 WD12.110	71DIN-B50WD1211			110	91	2.8	
	DIN69871-AD+B50 WD12.160	71DIN-B50WD1216			160	141	3.2	
	DIN69871-AD+B50 WD14.63	71DIN-B50WD1406	14	38	63	44	2.7	
	DIN69871-AD+B50 WD14.110	71DIN-B50WD1411			110	91	3	
	DIN69871-AD+B50 WD16.63	71DIN-B50WD1606	16	42	63	44	2.8	
	DIN69871-AD+B50 WD16.110	71DIN-B50WD1611			110	91	3.2	
	DIN69871-AD+B50 WD16.160	71DIN-B50WD1616			160	141	3.7	
	DIN69871-AD+B50 WD18.63	71DIN-B50WD1806	18	46	63	44	2.9	
	DIN69871-AD+B50 WD18.110	71DIN-B50WD1811			110	91	3.4	
	DIN69871-AD+B50 WD20.63	71DIN-B50WD2006	20	50	63	44	3	
	DIN69871-AD+B50 WD20.110	71DIN-B50WD2011			110	91	3.6	
	DIN69871-AD+B50 WD20.160	71DIN-B50WD2016			160	141	4.2	
	DIN69871-AD+B50 WD25.80	71DIN-B50WD2508	25	63	80	61	3.5	
	DIN69871-AD+B50 WD25.110	71DIN-B50WD2511			110	91	4.1	
DIN69871-AD+B50 WD25.160	71DIN-B50WD2516	160			141	5.1		
DIN69871-AD+B50 WD32.100	71DIN-B50WD3210	32	70	100	81	4.6	2	
DIN69871-AD+B50 WD32.160	71DIN-B50WD3216			160	141	6		
DIN69871-AD+B50 WD40.100	71DIN-B50WD4010	40	80	100	81	4.8		
DIN69871-AD+B50 WD40.160	71DIN-B50WD4016			160	141	6.5		



DIN 69871 AD+B PF

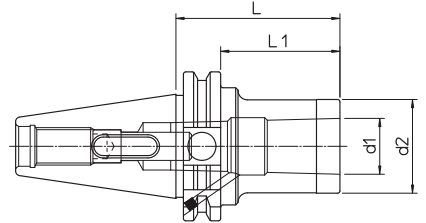


DIN	REF.	CODE	d1	d2	d3	M	L	L1	kg	fig.
40	DIN69871-AD+B40 PF16.35	71DIN-B40PF1603	16	32	-	-	35	17	0.9	1
	DIN69871-AD+B40 PF16.110	71DIN-B40PF1611					110		1.3	
	DIN69871-AD+B40 PF16.160	71DIN-B40PF1616					160		1.9	
	DIN69871-AD+B40 PF22.40	71DIN-B40PF2204	22	40			40	19	1	
	DIN69871-AD+B40 PF22.110	71DIN-B40PF2211					110		1.7	
	DIN69871-AD+B40 PF22.160	71DIN-B40PF2216					160		2.1	
	DIN69871-AD+B40 PF27.45	71DIN-B40PF2704	27	50			45	21	1.2	
	DIN69871-AD+B40 PF27.110	71DIN-B40PF2711					110		2.2	
	DIN69871-AD+B40 PF27.160	71DIN-B40PF2716					160		2.9	
	DIN69871-AD+B40 PF32.50	71DIN-B40PF3205	32	60			50	24	1.7	
	DIN69871-AD+B40 PF32.110	71DIN-B40PF3211					110		3	
DIN69871-AD+B40 PF40.55	71DIN-B40PF4005	55			2.1					
50	DIN69871-AD+B50 PF16.40	71DIN-B50PF1604	16	32	-	-	40	17	2.4	2
	DIN69871-AD+B50 PF16.110	71DIN-B50PF1611					110		2.8	
	DIN69871-AD+B50 PF16.160	71DIN-B50PF1616					160		3.1	
	DIN69871-AD+B50 PF22.45	71DIN-B50PF2204	22	40			45	19	2.6	
	DIN69871-AD+B50 PF22.110	71DIN-B50PF2211					110		3.2	
	DIN69871-AD+B50 PF22.160	71DIN-B50PF2216					160		3.7	
	DIN69871-AD+B50 PF27.50	71DIN-B50PF2705	27	50			50	21	2.7	
	DIN69871-AD+B50 PF27.110	71DIN-B50PF2711					110		3.6	
	DIN69871-AD+B50 PF27.160	71DIN-B50PF2716					160		4.4	
	DIN69871-AD+B50 PF32.55	71DIN-B50PF3205	32	60			55	24	3.2	
	DIN69871-AD+B50 PF32.120	71DIN-B50PF3212					120		5.5	
	DIN69871-AD+B50 PF40.60	71DIN-B50PF4006					60		4.3	
	DIN69871-AD+B50 PF40.120	71DIN-B50PF4012	120	7.1						
	DIN69871-AD+B50 PF60.70	71DIN-B50PF6007	60	128.5			101.6	M16	70	



- MORSE TAPER TOOLHOLDER
- WERKZEUGAUFNAHME FÜR MORSEKEGEL
- PORTAHERRAMIENTA CONO MORSE
- PORTE-OUTIL CONE MORSE
- PORTAUTENSILE CONO MORSE

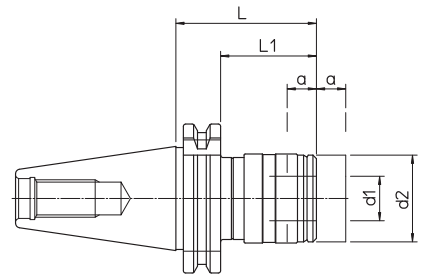
DIN 69871 AD+B CM - DIN 228 AB



DIN	REF.	CODE	MORSE	d1	d2	L	L1	kg
40	DIN69871-AD+B40 CM2.50 A-B	71DIN-B40CMB205	2	17.780	32	50	31	1
	DIN69871-AD+B40 CM2.125 A-B	71DIN-B40CMB212				125	106	1.4
	DIN69871-AD+B40 CM3.70 A-B	71DIN-B40CMB307	3	23.825	40	51	1.1	
	DIN69871-AD+B40 CM3.140 A-B	71DIN-B40CMB314			42	140	121	1.5
50	DIN69871-AD+B50 CM2.60 A-B	71DIN-B50CMB206	2	17.780	32	60	41	2.6
	DIN69871-AD+B50 CM2.125 A-B	71DIN-B50CMB212				125	106	2.8
	DIN69871-AD+B50 CM3.60 A-B	71DIN-B50CMB306	3	23.825	40	41	2.7	
	DIN69871-AD+B50 CM3.140 A-B	71DIN-B50CMB314			42	140	121	3.2
	DIN69871-AD+B50 CM4.80 A-B	71DIN-B50CMB408	4	31.267	48	80	61	2.9

- TAPPING TOOLHOLDER
- AUFNAHME MIT GEWINDESCHNEIDSCHNELLWECHSELFUTTER
- PORTAHERRAMIENTA PARA ROSCAR
- PORTE-OUTIL DE TARAUDAGE
- PORTAUTENSILE MASCHIATORE

DIN 69871 A MS



DIN	REF.	CODE	d1	d2	L	L1	a	kg
40	DIN69871-A40 MS1 M3-12	71DIN-A40M10312	19	36	60	40.9	7.5	0.9
	DIN69871-A40 MS2 M8-20	71DIN-A40M20820	31	53	98	78.9	12.5	1.3
50	DIN69871-A50 MS1 M3-12	71DIN-A50M10312	19	38	62	42.9	7.5	2.8
	DIN69871-A50 MS2 M8-20	71DIN-A50M20820	31	53	84	64.9	12.5	3.1
	DIN69871-A50 MS3 M14-33	71DIN-A50M31433	48	78	139	119.9	20	4.3



240

245

249

UNI
HSK DIN
MAS-BT

MAS 403 BT40 AD+B ER - DIN 6499

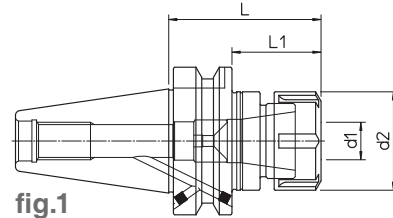


fig.1

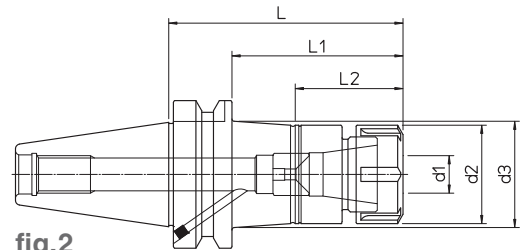
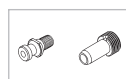
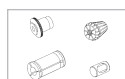


fig.2

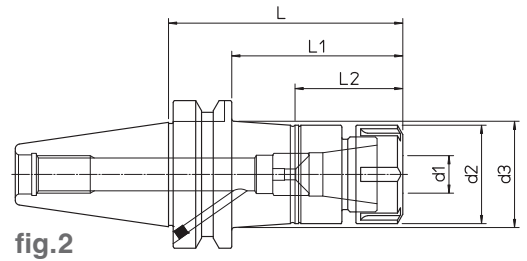
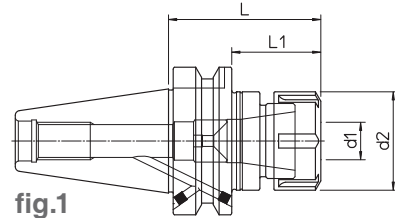
- Supplied without collets and clamping wrenches
- Ohne Spannzangen und Spannschlüssel.
- Pinzas elásticas y llaves de apriete excluidas
- Sans pinces et clés de serrage
- Pinze elastiche e chiavi di serraggio escluse

BT	REF.	CODE	TYPE	d1	d2	d3	L	L1	L2	kg	fig.
40	MAS403 BT40-AD+B ER16.60	71MBT-B40ER1606	ER 16 M	0.5 ~ 10	22	-	60	33	-	1	1
	MAS403 BT40-AD+B ER16.100	71MBT-B40ER1610				28	100	73	41	1.1	2
	MAS403 BT40-AD+B ER16.160	71MBT-B40ER1616				36.5	160	133		2.1	
	MAS403 BT40-AD+B ER25.65	71MBT-B40ER2506	ER 25	1 ~ 16	42	-	65	38	-	1.2	1
	MAS403 BT40-AD+B ER25.100	71MBT-B40ER2510				45.5	100	73	46	1.7	2
	MAS403 BT40-AD+B ER25.160	71MBT-B40ER2516				49.5	160	133		2.2	
	MAS403 BT40-AD+B ER32.70	71MBT-B40ER3207	ER 32	2 ~ 20	50	-	70	43	-	1.3	1
	MAS403 BT40-AD+B ER32.110	71MBT-B40ER3211					110	83		1.8	
	MAS403 BT40-AD+B ER32.160	71MBT-B40ER3216					160	133		2.8	
	MAS403 BT40-AD+B ER40.80	71MBT-B40ER4008	ER 40	3 ~ 26	63	-	80	53	-	1.4	
	MAS403 BT40-AD+B ER40.120	71MBT-B40ER4012					120	93		2.4	
	MAS403 BT40-AD+B ER40.160	71MBT-B40ER4016					160	133		3.4	



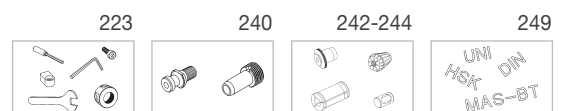
- COLLET CHUCK HOLDER
- SPANNZANGENFUTTER
- PORTAPINZAS
- PORTE-PINCES
- PORTAPINZE

MAS 403 BT50 AD+B ER - DIN 6499



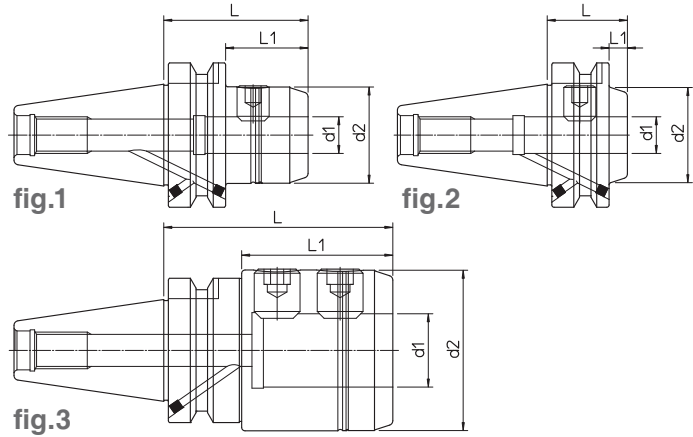
- Supplied without collets and clamping wrenches
- Ohne Spannzangen und Spannschlüssel.
- Pinzas elásticas y llaves de apriete excluidas
- Sans pinces et clés de serrage
- Pinze elastiche e chiavi di serraggio escluse

BT	REF.	CODE	TYPE	d ₁	d ₂	d ₃	L	L ₁	L ₂	kg	fig.
50	MAS403 BT50-AD+B ER16.100	71MBT-B50ER1610	ER 16 M	0.5 ~ 10	22	26.5	100	62	41	3.6	2
	MAS403 BT50-AD+B ER16.160	71MBT-B50ER1616				31	160	122		4.3	
	MAS403 BT50-AD+B ER25.75	71MBT-B50ER2507	ER 25	1 ~ 16	42	-	75	37	-	3.5	1
	MAS403 BT50-AD+B ER25.110	71MBT-B50ER2511				45.5	110	72	46	3.8	2
	MAS403 BT50-AD+B ER25.160	71MBT-B50ER2516				48.5	160	122		4.6	
	MAS403 BT50-AD+B ER32.80	71MBT-B50ER3208	ER 32	2 ~ 20	50	-	80	42	-	3.9	1
	MAS403 BT50-AD+B ER32.110	71MBT-B50ER3211				52.5	110	72	52	4.4	2
	MAS403 BT50-AD+B ER32.160	71MBT-B50ER3216				56	160	122		5	
	MAS403 BT50-AD+B ER40.100	71MBT-B50ER4010	ER 40	3 ~ 26	63	-	100	62	-	4.8	1
	MAS403 BT50-AD+B ER40.160	71MBT-B50ER4016				68.5	160	122	55	5.3	2

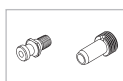


- WELDON TOOLHOLDER
- WERKZEUGAUFNAHME FÜR WELDON
- PORTAHERRAMIENTA WELDON
- PORTE-OUTIL WELDON
- PORTAUTENSILE WELDON

MAS 403 BT40 AD+B WD - DIN 1835-B

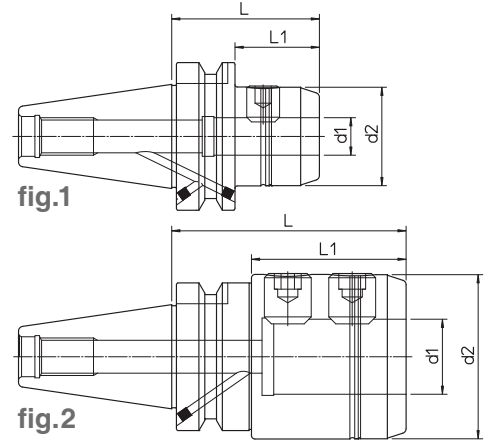


BT	REF.	CODE	d1 ^{H5}	d2	L	L1	kg	fig.
40	MAS403 BT40-AD+B WD06.50	71MBT-B40WD0605	6	23	50	23	0.8	1
	MAS403 BT40-AD+B WD06.110	71MBT-B40WD0611			110	83	0.9	
	MAS403 BT40-AD+B WD06.160	71MBT-B40WD0616			160	133	1.1	
	MAS403 BT40-AD+B WD08.50	71MBT-B40WD0805	8	26	50	23	0.9	
	MAS403 BT40-AD+B WD08.110	71MBT-B40WD0811			110	83	1.1	
	MAS403 BT40-AD+B WD08.160	71MBT-B40WD0816			160	133	1.3	
	MAS403 BT40-AD+B WD10.56	71MBT-B40WD1005	10	30	56	29	1	
	MAS403 BT40-AD+B WD10.110	71MBT-B40WD1011			110	83	1.2	
	MAS403 BT40-AD+B WD10.160	71MBT-B40WD1016			160	133	1.5	
	MAS403 BT40-AD+B WD12.35	71MBT-B40WD1203	12	34	35	8	0.9	2
	MAS403 BT40-AD+B WD12.56	71MBT-B40WD1205			56	29	1.1	1
	MAS403 BT40-AD+B WD12.110	71MBT-B40WD1211			110	83	1.4	
	MAS403 BT40-AD+B WD12.160	71MBT-B40WD1216			160	133	1.7	
	MAS403 BT40-AD+B WD14.56	71MBT-B40WD1405	14	38	56	29	1.2	
	MAS403 BT40-AD+B WD14.110	71MBT-B40WD1411			110	83	1.6	
	MAS403 BT40-AD+B WD16.35	71MBT-B40WD1603	16	42	35	8	1	2
	MAS403 BT40-AD+B WD16.63	71MBT-B40WD1606			63	36	1.3	1
	MAS403 BT40-AD+B WD16.110	71MBT-B40WD1611			110	83	1.7	
	MAS403 BT40-AD+B WD16.160	71MBT-B40WD1616			160	133	2.2	
	MAS403 BT40-AD+B WD18.63	71MBT-B40WD1806	18	46	63	36	1.4	
	MAS403 BT40-AD+B WD18.110	71MBT-B40WD1811			110	83	1.9	
	MAS403 BT40-AD+B WD20.35	71MBT-B40WD2003	20	50	35	8	1.1	2
	MAS403 BT40-AD+B WD20.63	71MBT-B40WD2006			63	36	1.5	1
	MAS403 BT40-AD+B WD20.110	71MBT-B40WD2011			110	83	2.1	
	MAS403 BT40-AD+B WD20.160	71MBT-B40WD2016			160	133	2.6	
	MAS403 BT40-AD+B WD25.35	71MBT-B40WD2503	25	63	35	8	1	2
	MAS403 BT40-AD+B WD25.100	71MBT-B40WD2510			100	73	2	3
	MAS403 BT40-AD+B WD25.160	71MBT-B40WD2516			160	133	3.2	
MAS403 BT40-AD+B WD32.100	71MBT-B40WD3210	32	70	100	67	2.5		
MAS403 BT40-AD+B WD32.160	71MBT-B40WD3216			160	127	3.9		

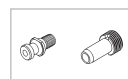


- WELDON TOOLHOLDER
- WERKZEUGAUFNAHME FÜR WELDON
- PORTAHERRAMIENTA WELDON
- PORTE-OUTIL WELDON
- PORTAUTENSILE WELDON

MAS 403 BT50 AD+B WD - DIN 1835-B



BT	REF.	CODE	d1 ^{H5}	d2	L	L1	kg	fig.
50	MAS403 BT50-AD+B WD06.63	71MBT-B50WD0606	6	23	63	25	2.3	1
	MAS403 BT50-AD+B WD06.110	71MBT-B50WD0611			110	72	2.4	
	MAS403 BT50-AD+B WD06.160	71MBT-B50WD0616			160	122	2.6	
	MAS403 BT50-AD+B WD08.63	71MBT-B50WD0806	8	26	63	25	2.4	
	MAS403 BT50-AD+B WD08.110	71MBT-B50WD0811			110	72	2.5	
	MAS403 BT50-AD+B WD08.160	71MBT-B50WD0816			160	122	2.7	
	MAS403 BT50-AD+B WD10.70	71MBT-B50WD1007	10	30	70	32	3	
	MAS403 BT50-AD+B WD10.110	71MBT-B50WD1011			110	72	3.2	
	MAS403 BT50-AD+B WD10.160	71MBT-B50WD1016			160	122	3.4	
	MAS403 BT50-AD+B WD12.70	71MBT-B50WD1207	12	34	70	32	3.1	
	MAS403 BT50-AD+B WD12.110	71MBT-B50WD1211			110	72	3.3	
	MAS403 BT50-AD+B WD12.160	71MBT-B50WD1216			160	122	3.6	
	MAS403 BT50-AD+B WD14.70	71MBT-B50WD1407	14	38	70	32	3.2	
	MAS403 BT50-AD+B WD14.110	71MBT-B50WD1411			110	72	3.5	
	MAS403 BT50-AD+B WD16.80	71MBT-B50WD1608	16	42	80	42	3.3	
	MAS403 BT50-AD+B WD16.110	71MBT-B50WD1611			110	72	3.5	
	MAS403 BT50-AD+B WD16.160	71MBT-B50WD1616			160	122	4	
	MAS403 BT50-AD+B WD18.80	71MBT-B50WD1808	18	46	80	42	3.4	
	MAS403 BT50-AD+B WD18.110	71MBT-B50WD1811			110	72	3.7	
	MAS403 BT50-AD+B WD20.80	71MBT-B50WD2008	20	50	80	42	3.5	
	MAS403 BT50-AD+B WD20.110	71MBT-B50WD2011			110	72	3.8	
	MAS403 BT50-AD+B WD20.160	71MBT-B50WD2016			160	122	4.5	
	MAS403 BT50-AD+B WD25.100	71MBT-B50WD2510	25	63	100	62	4.5	
	MAS403 BT50-AD+B WD25.125	71MBT-B50WD2512			125	87	5	
MAS403 BT50-AD+B WD25.160	71MBT-B50WD2516	160			122	5.7		
MAS403 BT50-AD+B WD32.100	71MBT-B50WD3210	32	70	100	62	5.6		
MAS403 BT50-AD+B WD32.160	71MBT-B50WD3216			160	122	7		
MAS403 BT50-AD+B WD40.110	71MBT-B50WD4011	40	80	110	72	5.8		
MAS403 BT50-AD+B WD40.160	71MBT-B50WD4016			160	122	7.4		



- MILL HOLDER
- WERKZEUGAUFNAHME FÜR AUFSTECKFRÄSER
- PORTAFRESA
- PORTE-FRAISES
- PORTAFRESA

MAS 403 BT AD+B

PF

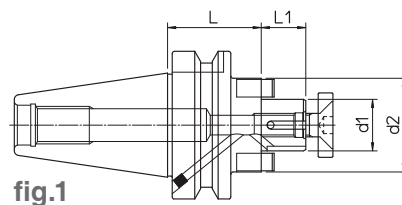


fig.1

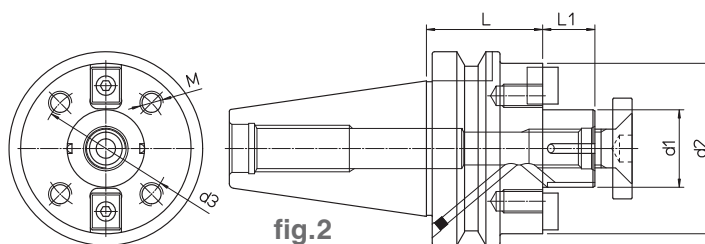
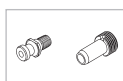


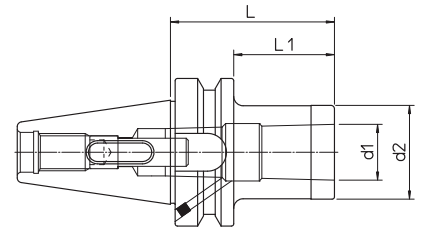
fig.2

BT	REF.	CODE	d ₁	d ₂	d ₃	M	L	L ₁	kg	fig.			
40	MAS403 BT40-AD+B PF16.40	71MBT-B40PF1604	16	32	-	-	40	17	0.9	1			
	MAS403 BT40-AD+B PF16.110	71MBT-B40PF1611					110		1.3				
	MAS403 BT40-AD+B PF16.160	71MBT-B40PF1616					160		1.6				
	MAS403 BT40-AD+B PF22.40	71MBT-B40PF2204	22	40			40	19	1				
	MAS403 BT40-AD+B PF22.110	71MBT-B40PF2211					110		1.6				
	MAS403 BT40-AD+B PF22.160	71MBT-B40PF2216					160		2.1				
	MAS403 BT40-AD+B PF27.45	71MBT-B40PF2704	27	50			45	21	1.2				
	MAS403 BT40-AD+B PF27.110	71MBT-B40PF2711					110		2.2				
	MAS403 BT40-AD+B PF27.160	71MBT-B40PF2716					160		2.9				
	MAS403 BT40-AD+B PF32.50	71MBT-B40PF3205	32	60			50	24	1.7				
	MAS403 BT40-AD+B PF32.110	71MBT-B40PF3211					110		3				
	MAS403 BT40-AD+B PF40.55	71MBT-B40PF4005	40	70			55	27	2.1				
50	MAS403 BT50-AD+B PF16.50	71MBT-B50PF1605	16	32	-	-	50	17	2.4	1			
	MAS403 BT50-AD+B PF16.110	71MBT-B50PF1611					110		2.8				
	MAS403 BT50-AD+B PF16.160	71MBT-B50PF1616					160		3.1				
	MAS403 BT50-AD+B PF22.50	71MBT-B50PF2205	22	40			50	19	2.6				
	MAS403 BT50-AD+B PF22.110	71MBT-B50PF2211					110		3.2				
	MAS403 BT50-AD+B PF22.160	71MBT-B50PF2216					160		3.7				
	MAS403 BT50-AD+B PF27.55	71MBT-B50PF2705	27	50			55	21	2.7				
	MAS403 BT50-AD+B PF27.110	71MBT-B50PF2711					110		3.6				
	MAS403 BT50-AD+B PF27.160	71MBT-B50PF2716					160		4.3				
	MAS403 BT50-AD+B PF32.55	71MBT-B50PF3205	32	60			55	24	3.2				
	MAS403 BT50-AD+B PF32.120	71MBT-B50PF3212					120		5.5				
	MAS403 BT50-AD+B PF40.60	71MBT-B50PF4006	40	88			66.7	M12	60		27	4.3	2
	MAS403 BT50-AD+B PF40.120	71MBT-B50PF4012							120			7.1	
MAS403 BT50-AD+B PF60.80	71MBT-B50PF6008	60	128.5	101.6	M16	80	40	6.8					



- MORSE TAPER TOOLHOLDER
- WERKZEUGAUFNAHME FÜR MORSEKEGEL
- PORTAHERRAMIENTA CONO MORSE
- PORTE-OUTIL CONE MORSE
- PORTAUTENSILE CONO MORSE

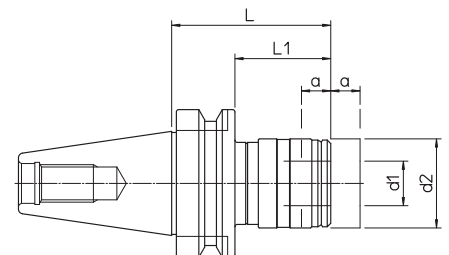
MAS 403 BT AD+B CM - DIN 228 AB



BT	REF.	CODE	MORSE	d1	d2	L	L1	kg
40	MAS403 BT40-AD+B CM2.50 A-B	71MBT-B40CMB205	2	17.780	32	50	23	1
	MAS403 BT40-AD+B CM2.125 A-B	71MBT-B40CMB212				125	98	1.3
	MAS403 BT40-AD+B CM3.70 A-B	71MBT-B40CMB307	3	23.825	40	70	43	1.1
	MAS403 BT40-AD+B CM3.140 A-B	71MBT-B40CMB314				140	113	1.5
50	MAS403 BT50-AD+B CM2.60 A-B	71MBT-B50CMB206	2	17.780	32	60	22	2.6
	MAS403 BT50-AD+B CM2.125 A-B	71MBT-B50CMB212				125	87	2.8
	MAS403 BT50-AD+B CM3.60 A-B	71MBT-B50CMB306	3	23.825	40	60	22	2.7
	MAS403 BT50-AD+B CM3.145 A-B	71MBT-B50CMB314				145	107	3.2
	MAS403 BT50-AD+B CM4.80 A-B	71MBT-B50CMB408	4	31.267	48	80	42	2.9

- TAPPING TOOLHOLDER
- AUFNAHME MIT GEWINDESCHNEIDSCHNELLWE
- PORTAHERRAMIENTA PARA ROSCAR
- PORTE-OUTIL DE TARAUDAGE
- PORTAUTENSILE MASCHIATORE

MAS 403 BT MS



BT	REF.	CODE	d1	d2	L	L1	a	kg
40	MAS403 BT40 MS1 M3-12	71MBT-40-M10312	19	36	67.5	40.5	7.5	0.9
	MAS403 BT40 MS2 M8-20	71MBT-40-M20820	31	53	94.5	67.5	12.5	1.3
50	MAS403 BT50 MS1 M3-12	71MBT-50-M10312	19	38	80	42	7.5	2.8
	MAS403 BT50 MS2 M8-20	71MBT-50-M20820	31	53	102.5	64.5	12.5	3.1
	MAS403 BT50 MS3 M14-33	71MBT-50-M31433	48	78	154.5	116.5	20	4.3

